

# Camalot™

This unique device is useful for any photographer that requires a frame-of-reference for dimensional scaling. The Camelot™ Arm provides a universal “Third Arm” to hold various measuring tools while attached to the bottom of any camera with a #1/4-20 threaded hole. Additionally, it has its own threaded hole that also lets you mount the Camelot™ Arm to a Tripod.

The Arm is adjustable horizontally, vertically and telescopes from 0 to 42”, so that you can articulate and lock a measuring tool in reference position for multiple shots or just to let you keep both hands on the camera for those critical shots. Now you provide a quick frame-of-reference and safely shoot points of interest on the floor, wall or even ceiling. If you use a camera a lot you will find a Camelot™ arm an indispensable tool!

Optional measuring tools consists of Fractional or Metric, 2 sizes of corner squares, 2 sizes of linear rules, and 2 different base colors: White or Black. The measuring tools available are all flat on the back side for optimum close up use, and come with a flush mounted universal connector for quick change to the telescoping rod clevis. (Pic. 1) All tools come with the specially designed Optirectilinear®\* graphics for optimum readability. See selection chart.



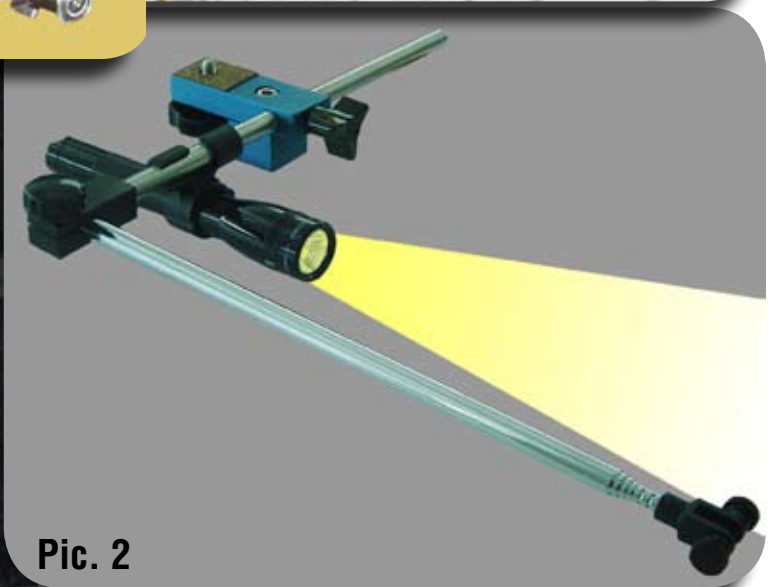
Pic. 1

ITEM	Part Number		Color	Price
<b>ARM ①</b>	Camalot™ Arm Basic	# CABK-1000-CAM	N/A	<b>\$ 75.00 Each</b>
<b>Fractional Set ④</b>	FCS/R-W4-CAM	FCS/R-B4-CAM	White or Black	<b>\$25.00 Each</b>
<b>Metric Set ④</b>	MCS/R-W4-CAM	MCS/R-B4-CAM	White or Black	
<b>ROD ②</b>	TELESCOPING ROD (Only)	# TSROD-42-CAM	N/A	<b>\$ 14.00 Each</b>
<b>CASE</b>	Carry Case (Only)	#CC1000-CAM	Black	<b>\$ 10.00 Each</b>
<b>HOLDER ③</b>	Flashlight Holder (Only)	#FLN-1000-CAM	N/A	<b>\$ 7.50 Each</b>

Lengths greater than 42” can be achieved by attaching two telescoping rods in-line. However, for horizontal applications, we recommend limiting the first rod (closest to the camera) to using only the 3 largest tubes. This gives you about 68” of extension. In the vertical Plane you can fully extend to 84” (7 ft).

- ① Each Camelot™ Arm comes with an ABFO#2 corner square in a Carry Case.
- ② Rod includes extension coupling to join 2 rods together.
- ③ Holds 3/4” (18cm) Dia. flashlight. Attaches to horizontal rod. (Pic. 2)
- ④ Set includes: (1)Small and (1)Large corner square, and (1)Small and (1)Large ruler of same color. (See **Set** Pictures)

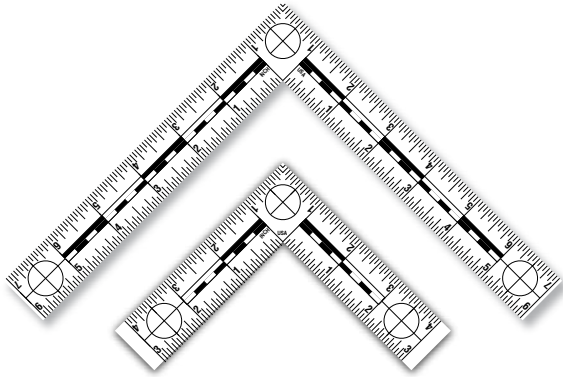
Note: Optirectilinear® is a registered Trade Mark of the Oregon Rule Co. and is defined as follows: Linear graduated rules with a corresponding checkered pattern that are visible beyond normal distances. All rights reserved.



Pic. 2

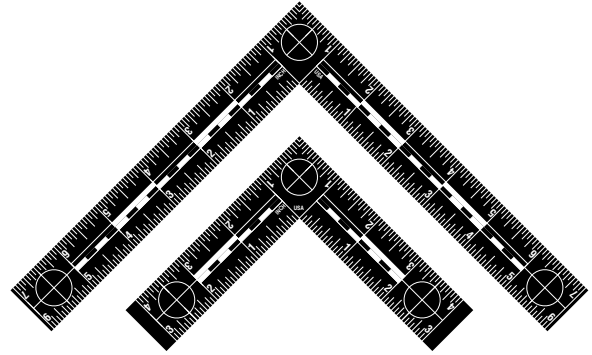
**FRACTIONAL SET**

White



#FCS/R-W4-CAM

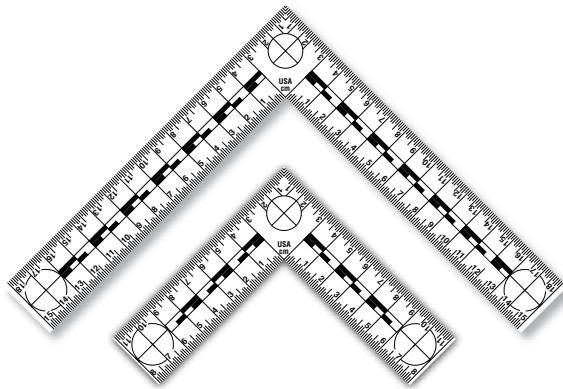
Black



#FCS/R-B4-CAM

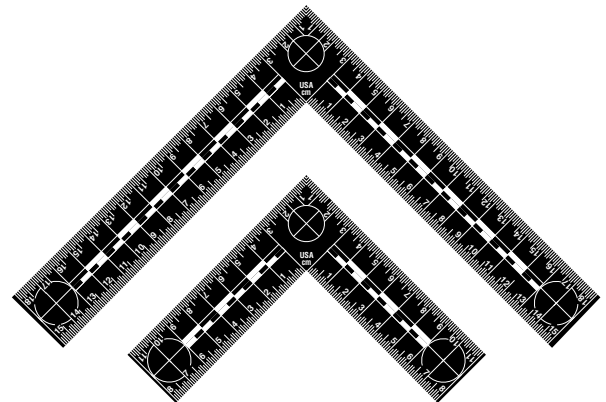
**METRIC SET**

White



#MCS/R-W4-CAM

Black



#MCS/R-B4-CAM