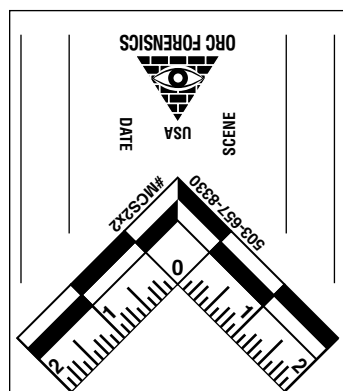
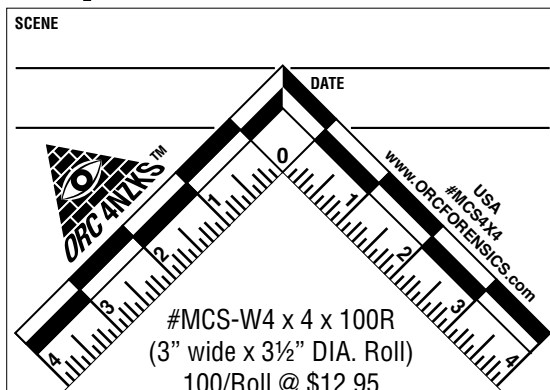
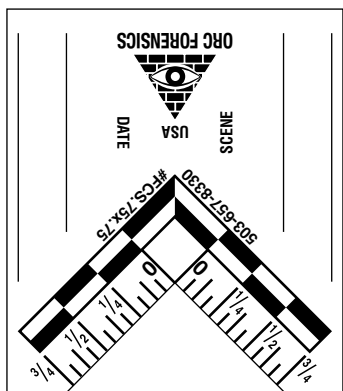


# Dimensional Reference Tapes and Labels

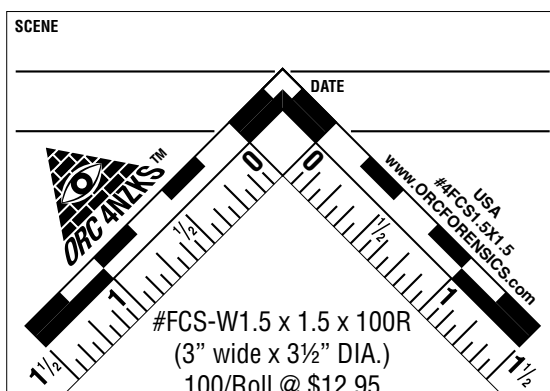
These products are designed for Patient Classification and Research Projects. They provide a quick liner measurement decal that can be stuck next to a point-of-interest and photographed. All items have a matte non-glare surface and come with an adhesive-backing that is high-tack, low-shear, removable, and will not cause surface degradation or leave a surface residue. Can be safely applied and removed from skin, glass, painted surfaces, hair, rugs, and plastics.



#MCS-W2 x 2 x 100R  
(1 1/8" wide x 3 1/2" DIA. Roll)  
100/Roll @ \$10.75



#FCS-W.75 x .75 x 100R  
(1 1/8" wide x 3 1/2" DIA. Roll)  
100/Roll @ \$10.75



#FCS-W1.5 x 1.5 x 100R  
(3" wide x 3 1/2" DIA.)  
100/Roll @ \$12.95

Put on Anywhere, Anything and Anyone!

All Items come on rolls of a predetermined count of images which are individualized on a liner for singular applications (Peel-and-Stick), and have open spaces available for labeling so that they can be retained permanently for future reference. Graphics include an Optirectilinear® Black/White Pattern for enhanced visibility.



#CN-W0.02Lx250R  
(3/4" wide x 3 5/8" DIA)  
250/Roll @ \$5.25

#CN-W0.02Lx500R  
(3/4" wide x 4" DIA)  
500/Roll @ \$6.75



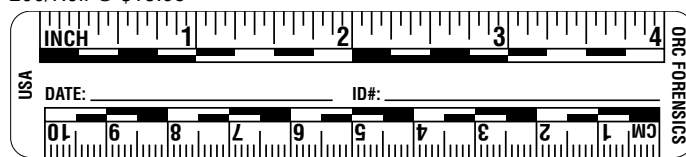
#CN-B/W0.02Lx250R  
(3/4" wide x 3 5/8" DIA)  
250/Roll @ \$5.25

(1" wide x 3 7/8" DIA. Roll)  
200/Roll @ \$9.50

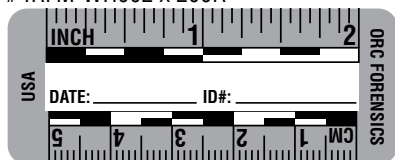


#4RFM-WH002 x 200R

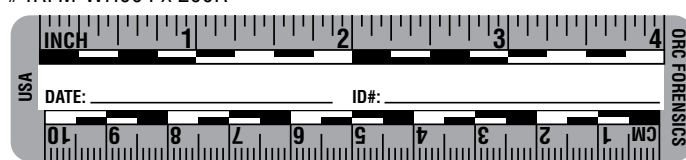
(1" wide x 4 1/8" DIA. Roll)  
200/Roll @ \$13.95



#4RFM-WH004 x 200R



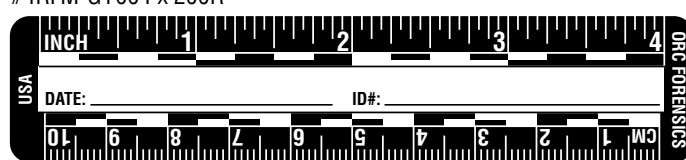
#4RFM-GY002 x 200R



#4RFM-GY004 x 200R



#4RFM-BK002 x 200R



#4RFM-BK004 x 200R



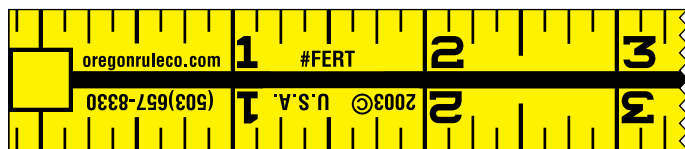
Also available are 3 types of economical roll tapes. They are convenient, economical, and as the name implies come on a self wound roll, no linear required. Rip or cut off and press into place. A full length roll provides pocket size carrying. Each has a square write in box @ each zero. All come on 1" DIA cores.

The adhesive is of "Painters Mask" quality permitting good adhesion but still able to be removed without causing surface degradation. Base material is coated to minimize liquid absorption and UV fading.

## Features

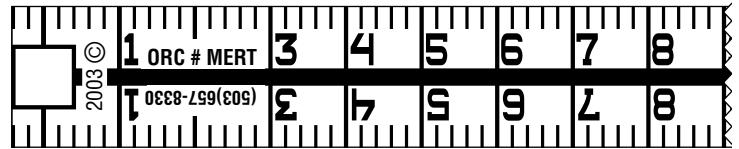
- 1.0 The "FERT", 36" long by  $\frac{3}{4}$ " wide rule has continuous inches,  $\frac{1}{8}$ " graduations, with 35 repeating sections (105 feet overall length). A  $\frac{5}{16}$ th square box is located at the zero of each section. Available in yellow.
- 2.0 The "MERT", 1 meter long by  $\frac{3}{4}$ " wide rule has continuous centimeters, 2mm graduations, with 32 repeating sections, (32 meters overall length). A 8mm square box is located at the zero of each section. Available in white.
- 3.0 The "FERT", 12" long by 1" wide rule has continuous inches,  $\frac{1}{16}$ " graduations, with 42 repeating sections (42 feet overall length). A  $\frac{5}{16}$ th square box is located at the zero of each section. Available in white.
- 4.0 The "FMERT", 12" long by 1" wide rule has continuous inches and centimeters,  $\frac{1}{16}$ " graduations/1mm, with 42 repeating sections. Available in white.
- 5.0 The "EVID" decal is 1" wide x 5" long and has 100 units per roll. Area provided to write in "Date" and a significant "Number".

### Fractional 36 inch Rule



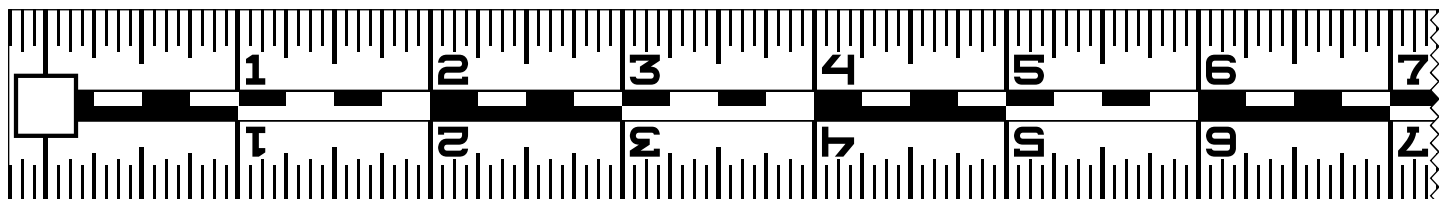
( $\frac{3}{4}$ " wide x 3" DIA. Roll)  
FERT-Y36Dx35R @ \$12.95

### Metric 1 meter Rule



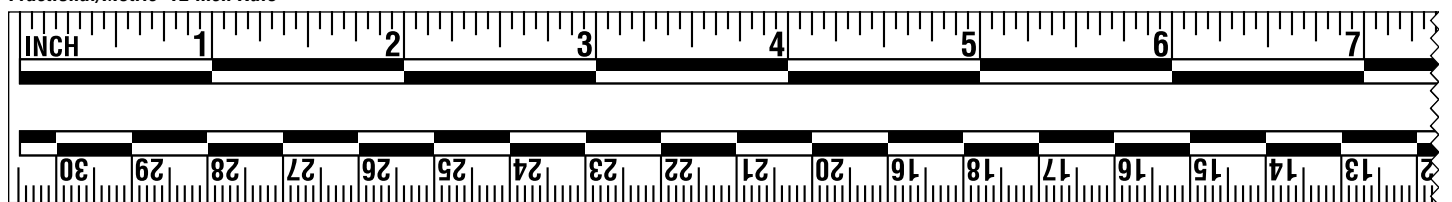
( $\frac{3}{4}$ " wide x 3" DIA. Roll)  
MERT-W1.0Dx32R @ \$12.95

### Fractional 12 inch Rule



(1" wide x 2 $\frac{1}{4}$ " DIA. Roll)  
FERT-W12Dx42R @ \$6.50

### Fractional/Metric 12 inch Rule



(1" wide x 2 $\frac{1}{4}$ " DIA. Roll)  
FMERT-W12L x42R @ \$6.50

# EVIDENCE

DATE \_\_\_\_\_ NUMBER \_\_\_\_\_

MADE IN U.S.A.

Units come individually packaged in a clear zip-lock bag. Bulk packaging is available. (1" wide x 3 $\frac{7}{8}$ " DIA. Roll)  
#4EVID-R1.0X100R @ \$7.25

# I.D. Labels

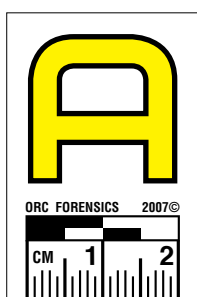
The Forensic Metric Alpha Numerical Decals with yellow icons provide several enhanced features, and new ones never before incorporated into a “simple” adhesive backed identification label.

- 1.0 A 2 cm rule is provided at the bottom edge for a frame-of-reference that also provides a focus point for camera lens adjustment.
- 2.0 An Optirectilinear® bar scale is included for distance reading.
- 3.0 Icons (Letters, Numbers and Arrows) are specially designed to be bold. They are ¾” high and ¾” wide with a bright yellow outlined background, greatly increasing visibility.
- 4.0 Decals are 1” wide x 1½” high and normally come on a sheet of 50. Half pack sets are also available that contain 25 of each selection for Alpha (A-Z) or Numerical (0-9).
- 5.0 Sets come prepackaged in a clear water proof zip lock poly bag.
- 6.0 An “Up Arrow” and “Blank” are available when emphasis is desired for specific location or piece of evidence.
- 7.0 Decals come with a removable adhesive to prevent damage to sensitive surfaces, and are reusable until the adhesive surface degrades. For best longevity store on original sheet surface.
- 8.0 Note that zero and the Letter “O” are distinguishable from one another as the zero has a diagonal line across its center.

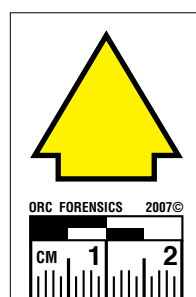
Icon	Part#	MSRP	Icon	Part#	MSRP	Icon	Part#	MSRP
ZERO	4MANDY-0	\$1.65	A	4MANDY-A	\$1.65	O	4MANDY-O	\$1.65
ONE	4MANDY-1	\$1.65	B	4MANDY-B	\$1.65	P	4MANDY-P	\$1.65
TWO	4MANDY-2	\$1.65	C	4MANDY-C	\$1.65	Q	4MANDY-Q	\$1.65
THREE	4MANDY-3	\$1.65	D	4MANDY-D	\$1.65	R	4MANDY-R	\$1.65
FOUR	4MANDY-4	\$1.65	E	4MANDY-E	\$1.65	S	4MANDY-S	\$1.65
FIVE	4MANDY-5	\$1.65	F	4MANDY-F	\$1.65	T	4MANDY-T	\$1.65
SIX	4MANDY-6	\$1.65	G	4MANDY-G	\$1.65	U	4MANDY-U	\$1.65
SEVEN	4MANDY-7	\$1.65	H	4MANDY-H	\$1.65	V	4MANDY-V	\$1.65
EIGHT	4MANDY-8	\$1.65	I	4MANDY-I	\$1.65	W	4MANDY-W	\$1.65
NINE	4MANDY-9	\$1.65	J	4MANDY-J	\$1.65	X	4MANDY-X	\$1.65
UP ARROW	4MANDY-UA	\$1.65	K	4MANDY-K	\$1.65	Y	4MANDY-Y	\$1.65
“BLANK”	4MANDY-BK	\$1.65	L	4MANDY-L	\$1.65	Z	4MANDY-Z	\$1.65
NUMBER SET	4MANDY-NS	\$16.50	M	4MANDY-M	\$1.65	ALPHA SET	4MANDY-AS	\$42.80
NUMBER ½ SET	4MANDY-NHS	\$8.25	N	4MANDY-N	\$1.65	ALPHA ½ SET	4MANDY-AHS	\$21.40



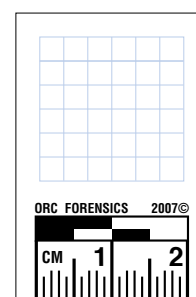
**NUMBERS**



**LETTERS**



**ARROW**



**BLANK**

Note: Optirectilinear® is a registered Trade Mark of the Oregon Rule Co. and is defined as follows: Linear graduated rules with a corresponding checkered pattern that are visible beyond normal distances. All rights reserved.